



## ASHBY

3 Bedrooms • 2 1/2 Baths • 1,820 Sq. Ft.



**ProBuilt Homes, Inc.** • 9124 Tyler Bvd. • Mentor, Ohio 44060  
Tel: (440)255-6535 • Fax: (440)974-8360 • Email: [sales@probuilt-homes.com](mailto:sales@probuilt-homes.com)

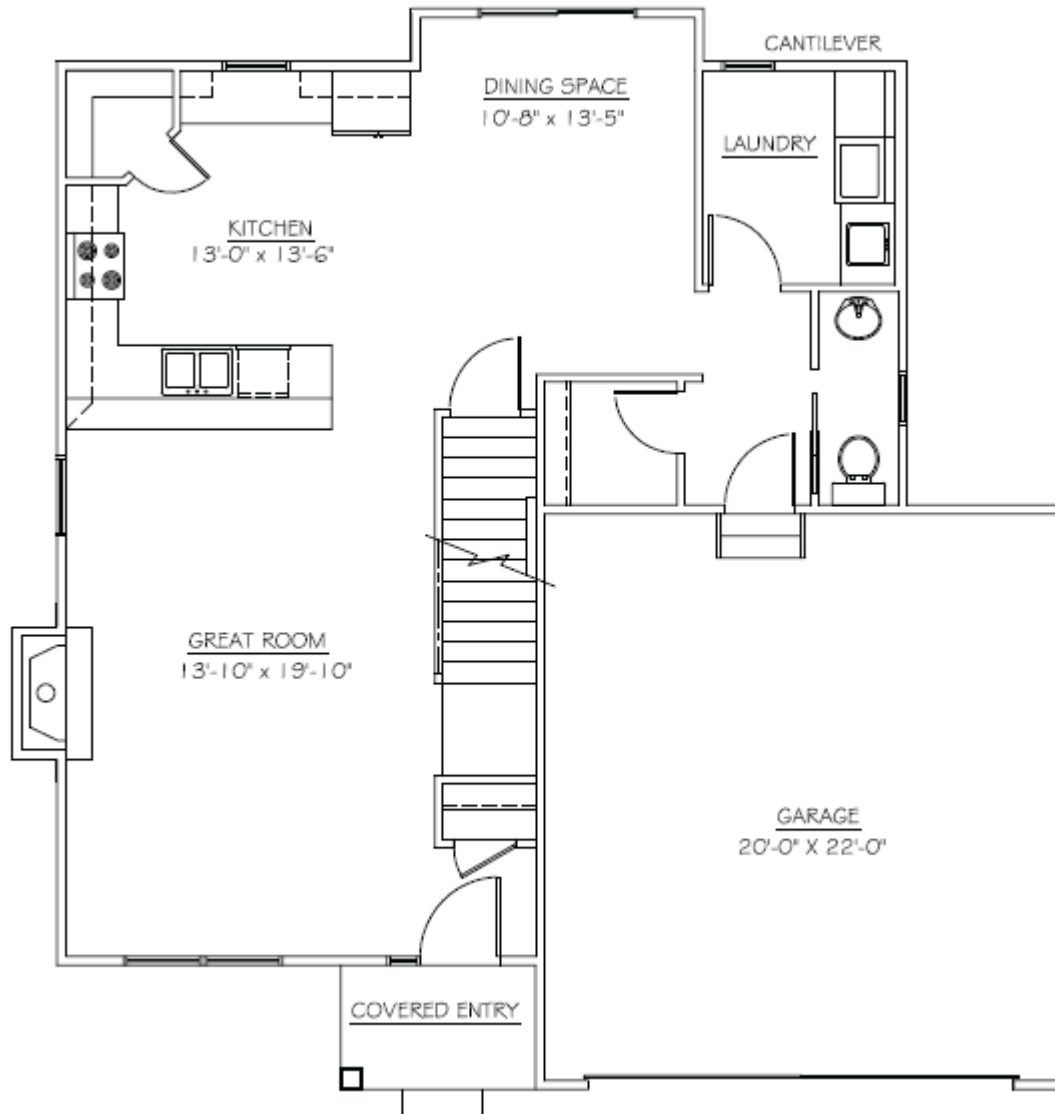
[www.probuilt-homes.com](http://www.probuilt-homes.com)



## Optional Elevation

Some optional features may be shown or discussed. See ProBuilt sales associate for details and standard features. Floor plans are subject to change. This rendering and floor plans are for illustrative purposes only and are not intended to be a part of any purchase agreement or construction contract. In the interest of continued product improvement and the challenge of material availability, builder reserves the right to modify plans, specifications, and standard features without notice.

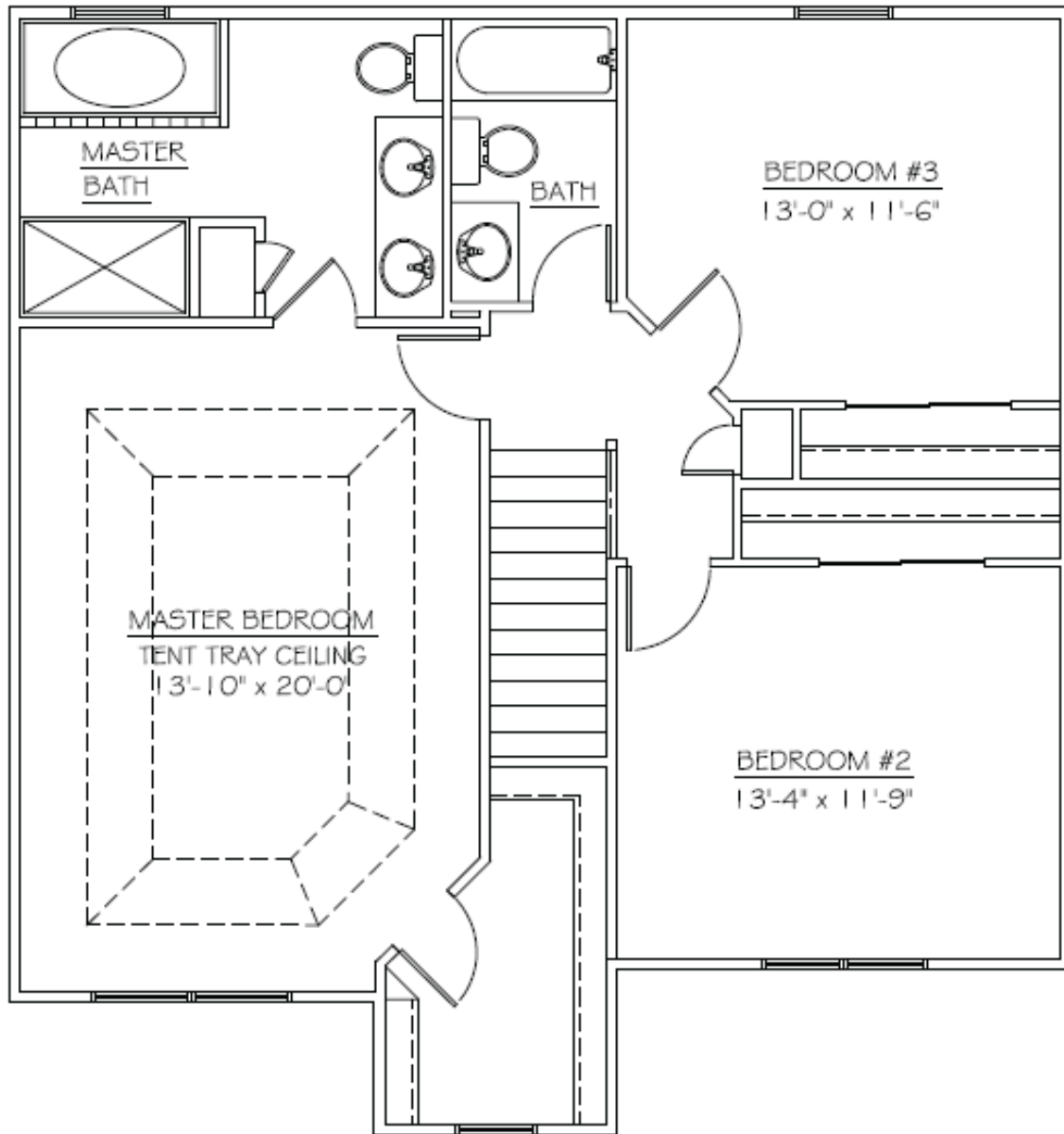
This home plan is the exclusive copyright of ProBuilt Homes, Inc. or the plan designer. All rights reserved. Reproduction of this plan, either in whole or in part, including any form of copying or derivative works therefrom is strictly prohibited.



First Floor Plan  
877 Sq Ft.

Some optional features may be shown or discussed. See ProBuilt sales associate for details and standard features. Floor plans are subject to change. This rendering and floor plans are for illustrative purposes only and are not intended to be a part of any purchase agreement or construction contract. In the interest of continued product improvement and the challenge of material availability, builder reserves the right to modify plans, specifications, and standard features without notice.

This home plan is the exclusive copyright of ProBuilt Homes, Inc. or the plan designer. All rights reserved. Reproduction of this plan, either in whole or in part, including any form of copying or derivative works therefrom is strictly prohibited.



Second Floor Plan  
943 Sq. Ft.

Some optional features may be shown or discussed. See ProBuilt sales associate for details and standard features. Floor plans are subject to change. This rendering and floor plans are for illustrative purposes only and are not intended to be a part of any purchase agreement or construction contract. In the interest of continued product improvement and the challenge of material availability, builder reserves the right to modify plans, specifications, and standard features without notice.

This home plan is the exclusive copyright of ProBuilt Homes, Inc. or the plan designer. All rights reserved. Reproduction of this plan, either in whole or in part, including any form of copying or derivative works therefrom is strictly prohibited.