



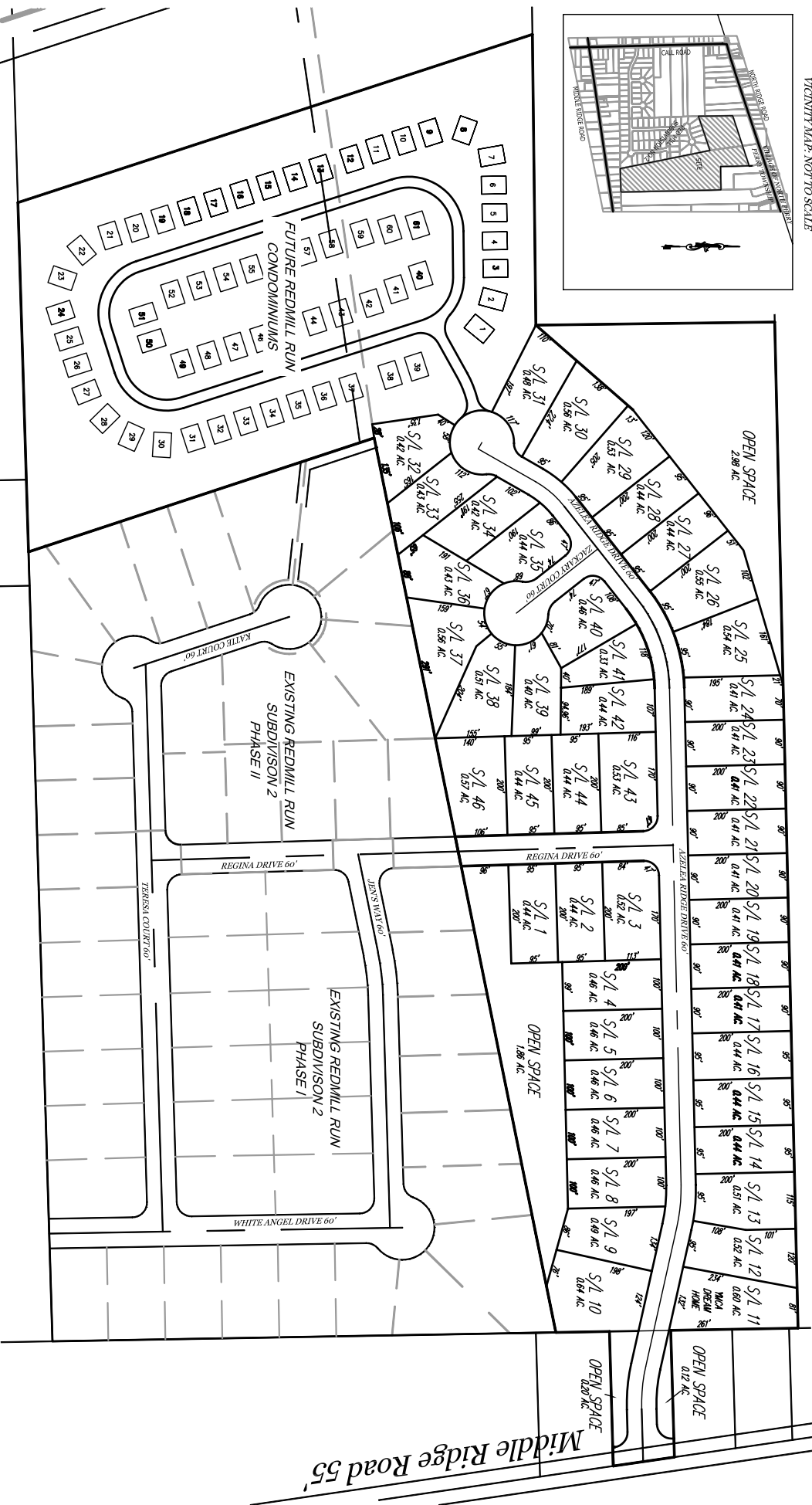
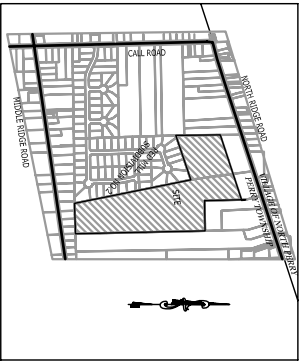
POLARIS ENGINEERING & SURVEYING, INC.
 3460 CHAMBER ROAD - SUITE D
 WILLOUGHBY HILLS, OHIO 44094
 PHONE: (440) 944-9484
 www.polaris-es.com

PREPARED BY:

LORETO DEVELOPMENT PERRY COMPANY
 PROUDLY PRESENTS:
AZALEA RIDGE SUBDIVISION
 A NEW SINGLE FAMILY COMMUNITY
 PERRY TOWNSHIP - LAKE COUNTY

CONTACT:
 LORETO DEVELOPMENT PERRY COMPANY
 2794 SOM CENTER ROAD
 WILLOUGHBY HILLS, OHIO 44094
 PHONE: (440) 944-9484 / (440) 477-6807
 FAX: (440) 944-9486

VICINITY MAP: NOT TO SCALE



SCALE 1" = 300'