

MORELAND MEWS

FOR CLUSTER HOME DEVELOPMENT

ASPEN RIDGE, LLC

CENTRILINE CURVE TABLE

| CURVE | RADIUS | DELTA | ARC | TANGENT | CHORD | CHORD BEARINGS |
|-------|----------|----------|---------|---------|-----------|----------------|
| C11 | 20.00' | 79.5439° | 27.89' | 16.76' | 16.8766' | 49.6°E |
| C12 | 108.00' | 18.5011° | 35.50' | 17.91' | 181.0052' | 34.2°W |
| C13 | 27.00' | 59.5131° | 28.21' | 15.54' | 142.4053' | 107.42°W |
| C14 | 1212.00' | 10.0603° | 213.67' | 107.11' | 213.39' | 107.42°W |
| C15 | 488.00' | 12.0715° | 103.23' | 51.81' | 103.04' | 108.42°E |

SUBLOT CURVE TABLE

| CURVE | RADIUS | DELTA | ARC | TANGENT | CHORD | CHORD BEARINGS |
|-------|---------|----------|---------|---------|-----------|----------------|
| C6 | 25.00' | 29.2107° | 12.81' | 6.55' | 12.67' | 186.1525°E |
| C7 | 98.00' | 18.5011° | 31.56' | 15.92' | 181.0052' | 34.2°W |
| C8 | 30.00' | 97.3431° | 51.08' | 34.25' | 54.0466' | 107.42°W |
| C9 | 478.00' | 12.0715° | 117.51' | 58.87' | 117.51' | 117.51°E |

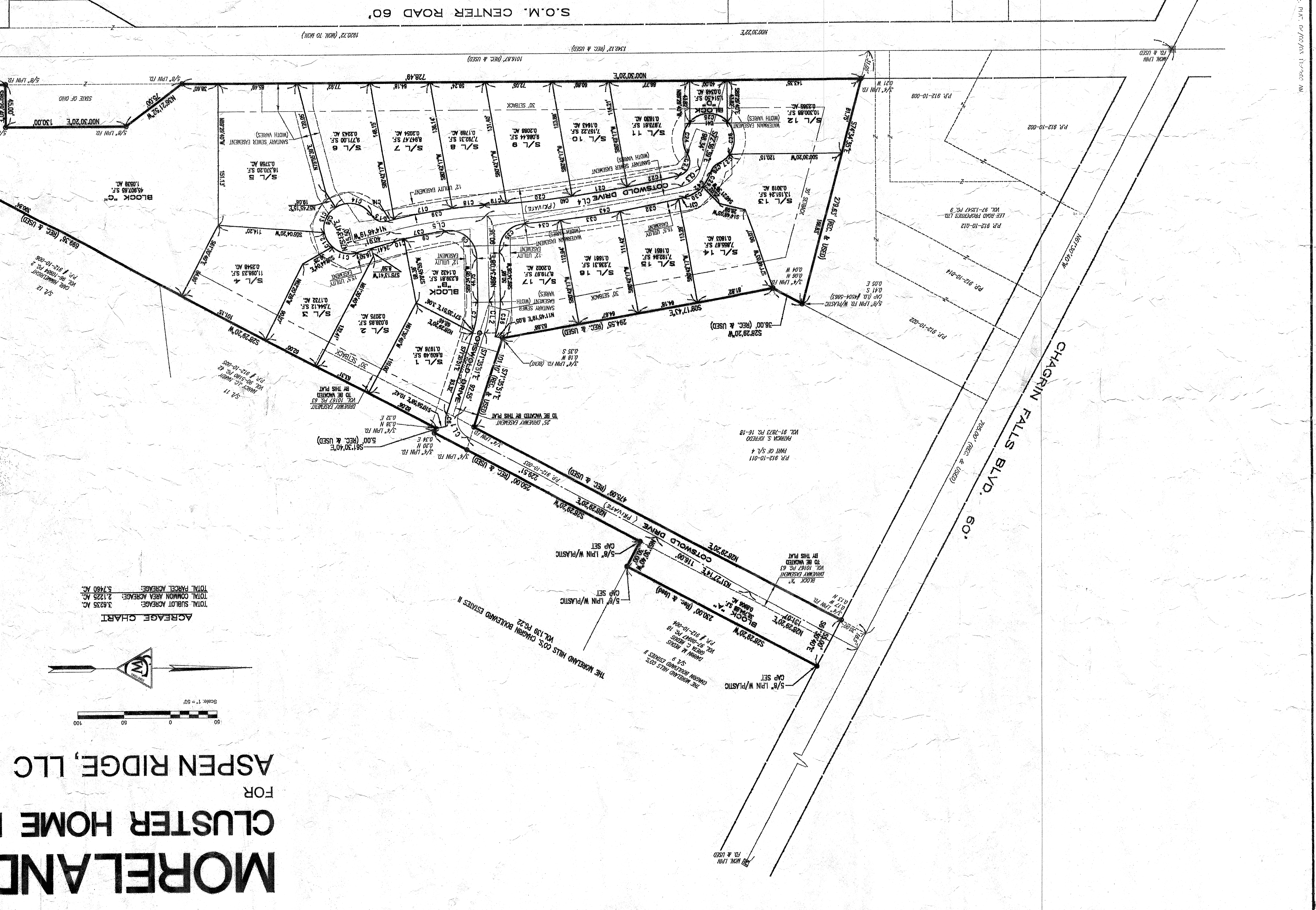
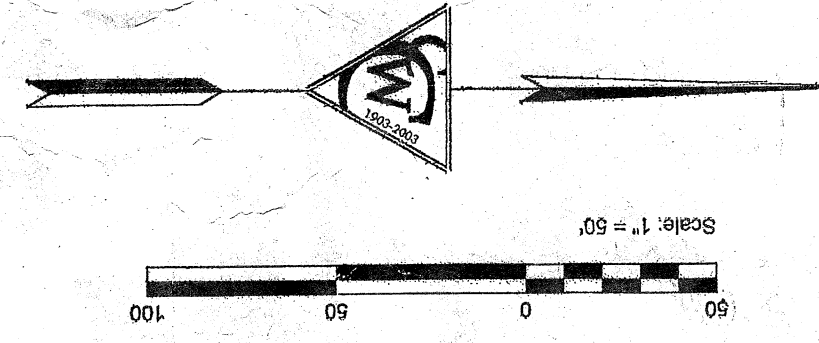
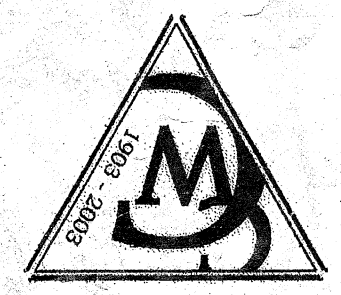
AGREGE CHART

| NO. | AREA (S.F.) | PERCENTAGE |
|-----|-------------|------------|
| C1 | 11.75 | 0.25% |
| C2 | 11.75 | 0.25% |
| C3 | 11.75 | 0.25% |
| C4 | 11.75 | 0.25% |
| C5 | 11.75 | 0.25% |
| C6 | 11.75 | 0.25% |
| C7 | 11.75 | 0.25% |
| C8 | 11.75 | 0.25% |
| C9 | 11.75 | 0.25% |
| C10 | 11.75 | 0.25% |
| C11 | 11.75 | 0.25% |
| C12 | 11.75 | 0.25% |
| C13 | 11.75 | 0.25% |
| C14 | 11.75 | 0.25% |
| C15 | 11.75 | 0.25% |
| C16 | 11.75 | 0.25% |
| C17 | 11.75 | 0.25% |
| C18 | 11.75 | 0.25% |
| C19 | 11.75 | 0.25% |
| C20 | 11.75 | 0.25% |
| C21 | 11.75 | 0.25% |
| C22 | 11.75 | 0.25% |
| C23 | 11.75 | 0.25% |
| C24 | 11.75 | 0.25% |
| C25 | 11.75 | 0.25% |
| C26 | 11.75 | 0.25% |
| C27 | 11.75 | 0.25% |
| C28 | 11.75 | 0.25% |
| C29 | 11.75 | 0.25% |
| C30 | 11.75 | 0.25% |
| C31 | 11.75 | 0.25% |
| C32 | 11.75 | 0.25% |
| C33 | 11.75 | 0.25% |
| C34 | 11.75 | 0.25% |
| C35 | 11.75 | 0.25% |
| C36 | 11.75 | 0.25% |
| C37 | 11.75 | 0.25% |
| C38 | 11.75 | 0.25% |
| C39 | 11.75 | 0.25% |
| C40 | 11.75 | 0.25% |
| C41 | 11.75 | 0.25% |
| C42 | 11.75 | 0.25% |
| C43 | 11.75 | 0.25% |

CHORD BEARINGS

| NO. | BEARING | LENGTH (S.F.) |
|-----|------------|---------------|
| C1 | 186.1525°E | 12.67 |
| C2 | 107.42°W | 103.04 |
| C3 | 107.42°W | 213.39 |
| C4 | 107.42°W | 107.11 |
| C5 | 108.42°E | 103.04 |
| C6 | 186.1525°E | 12.67 |
| C7 | 34.2°W | 181.0052 |
| C8 | 107.42°W | 54.0466 |
| C9 | 117.51°E | 117.51 |
| C10 | 117.51°E | 117.51 |
| C11 | 117.51°E | 117.51 |
| C12 | 34.2°W | 181.0052 |
| C13 | 107.42°W | 54.0466 |
| C14 | 107.42°W | 107.11 |
| C15 | 108.42°E | 103.04 |
| C16 | 107.42°W | 103.04 |
| C17 | 107.42°W | 213.39 |
| C18 | 107.42°W | 107.11 |
| C19 | 108.42°E | 103.04 |
| C20 | 107.42°W | 103.04 |
| C21 | 107.42°W | 213.39 |
| C22 | 107.42°W | 107.11 |
| C23 | 108.42°E | 103.04 |
| C24 | 107.42°W | 103.04 |
| C25 | 107.42°W | 213.39 |
| C26 | 107.42°W | 107.11 |
| C27 | 108.42°E | 103.04 |
| C28 | 107.42°W | 103.04 |
| C29 | 107.42°W | 213.39 |
| C30 | 107.42°W | 107.11 |
| C31 | 108.42°E | 103.04 |
| C32 | 107.42°W | 103.04 |
| C33 | 107.42°W | 213.39 |
| C34 | 107.42°W | 107.11 |
| C35 | 108.42°E | 103.04 |
| C36 | 107.42°W | 103.04 |
| C37 | 107.42°W | 213.39 |
| C38 | 107.42°W | 107.11 |
| C39 | 108.42°E | 103.04 |
| C40 | 107.42°W | 103.04 |
| C41 | 107.42°W | 213.39 |
| C42 | 107.42°W | 107.11 |
| C43 | 108.42°E | 103.04 |

THE C.W. COURNEY COMPANY
 Civil & Consulting Engineers
 Land Surveyors
 771 Beta Drive
 Cleveland, Ohio 44143-2384
 [phone] 440.449.4005 [fax] 440.449.0883
 www.cwcourney.com
 Job No. 1511-5



C:\1511\1511.dwg: Monday, 11/11/08 10:56:05 AM
 PLOT: 0/10/05 11:39:02 AM